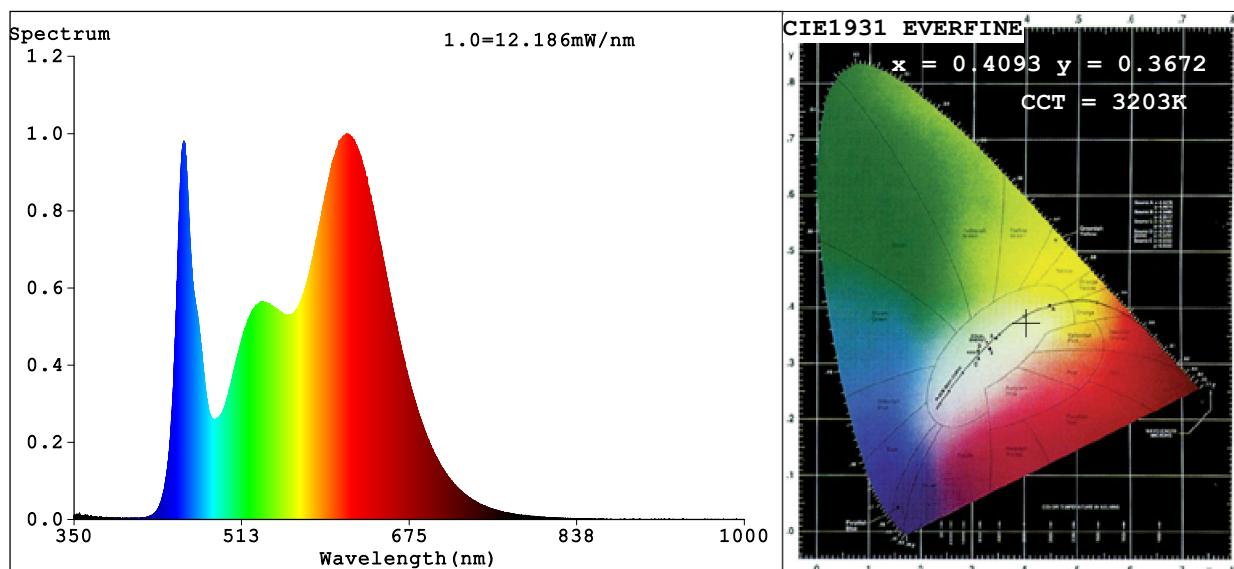


Spectrum Test Report



Color Parameters:

Chromaticity Coordinate: $x=0.4093$ $y=0.3672$ $u'=0.2485$ $v'=0.5017$

CCT=3203K (Duv=-0.0114) Dominant WL:Ld =588.0nm Purity=33.0%

Ratio:R=25.5% G=70.6% B=3.9%; Peak WL:Lp=614.1nm FWHM=146.5nm

Render Index:Ra=90.9 CRI=88.8 TM30:Rf=89 Rg=104

R1 =93 R2 =92 R3 =93 R4 =98 R5 =93 R6 =84 R7 =88

R8 =86 R9 =75 R10=86 R11=92 R12=74 R13=91 R14=98 R15=98

Photo Parameters:

Flux = 554.8 lm Eff. : 112.72 lm/W Fe = 1.901 W Scotopic:919.57 S/P:1.6575

Electrical parameters:

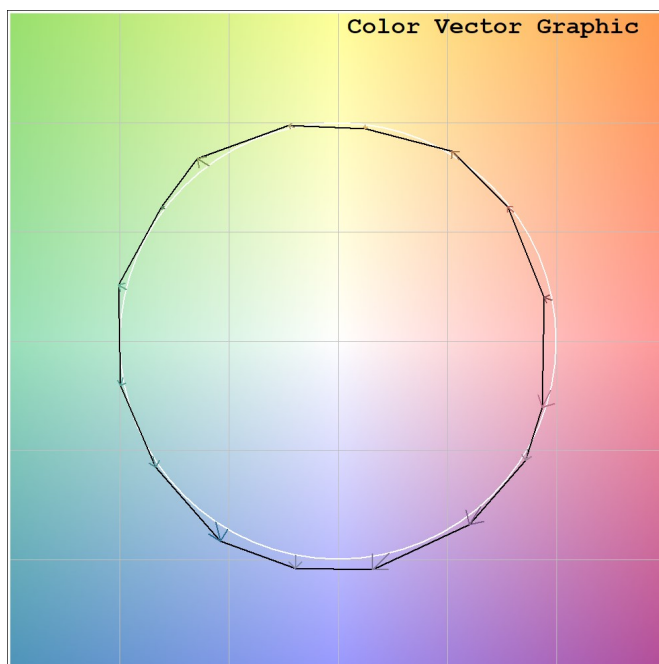
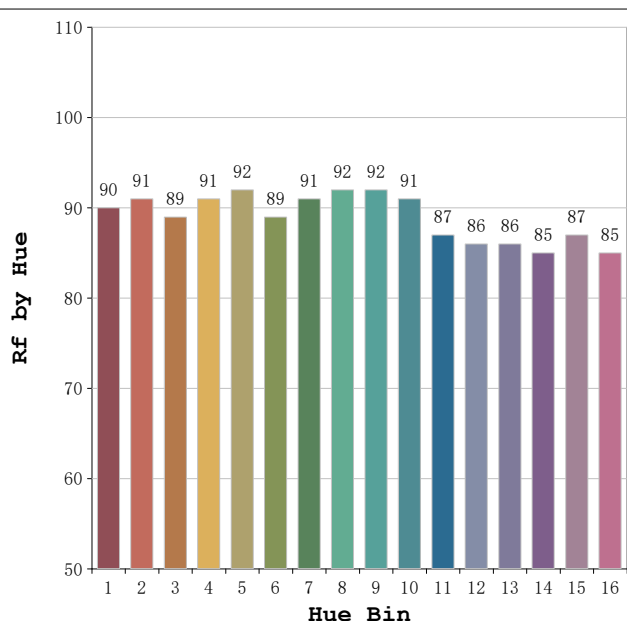
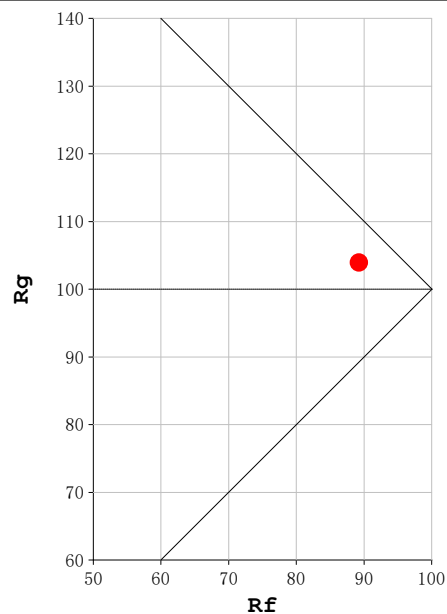
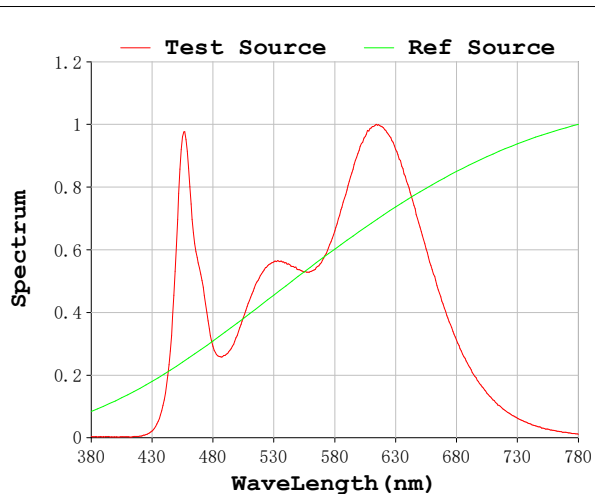
V = 23.998 V I = 0.2051 A P = 4.922 W PF = 1.000

Status: Integral T = 2000 ms Ip = 44330 (68%)

Model:Ecoled Palma 3200K
 Tester:Sergio Carneros
 Temperature:25.8Deg
 Manufacturer:Luz Negra

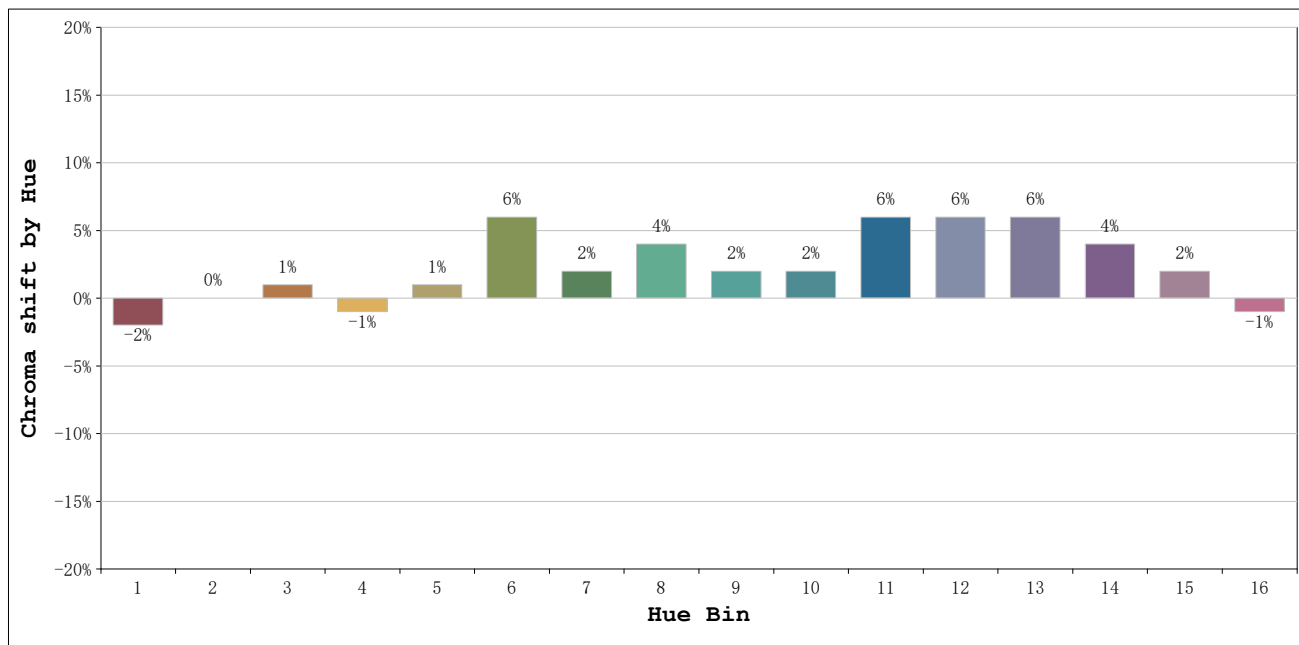
Number: 33.006
 Date:25-5-2021
 Humidity:57%
 Remarks:100cm de tira flexible

Rf: 89 **CCT: 3203 K** **u': 0.2485**
Rg: 104 **Duv: -0.0114** **v': 0.5017**



Model:Ecoled Palma 3200K
 Tester:Sergio Carneros
 Temperature:25.8Deg
 Manufacturer:Luz Negra

Number: 33.006
 Date:25-5-2021
 Humidity:57%
 Remarks:100cm de tira flexible



Hue Bin	Hue Angle	Rf	Graphic shift(%)	
			Chroma	Hue
1	0.0° - 22.5°	90	-2	2
2	22.5° - 45.0°	91	0	3
3	45.0° - 67.5°	89	1	5
4	67.5° - 90.0°	91	-1	0
5	90.0° - 112.5°	92	1	2
6	112.5° - 135.0°	89	6	3
7	135.0° - 157.5°	91	2	0
8	157.5° - 180.0°	92	4	0
9	180.0° - 202.5°	92	2	3
10	202.5° - 225.0°	91	2	5
11	225.0° - 247.5°	87	6	7
12	247.5° - 270.0°	86	6	1
13	270.0° - 292.5°	86	6	-8
14	292.5° - 315.0°	85	4	-8
15	315.0° - 337.5°	87	2	-4
16	337.5° - 360.0°	85	-1	-8

Model:Ecoled Palma 3200K
 Tester:Sergio Carneros
 Temperature:25.8Deg
 Manufacturer:Luz Negra

Number: 33.006
 Date:25-5-2021
 Humidity:57%
 Remarks:100cm de tira flexible